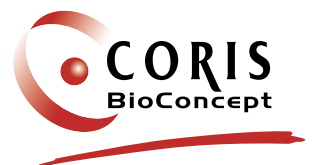


RSV Respi-Strip

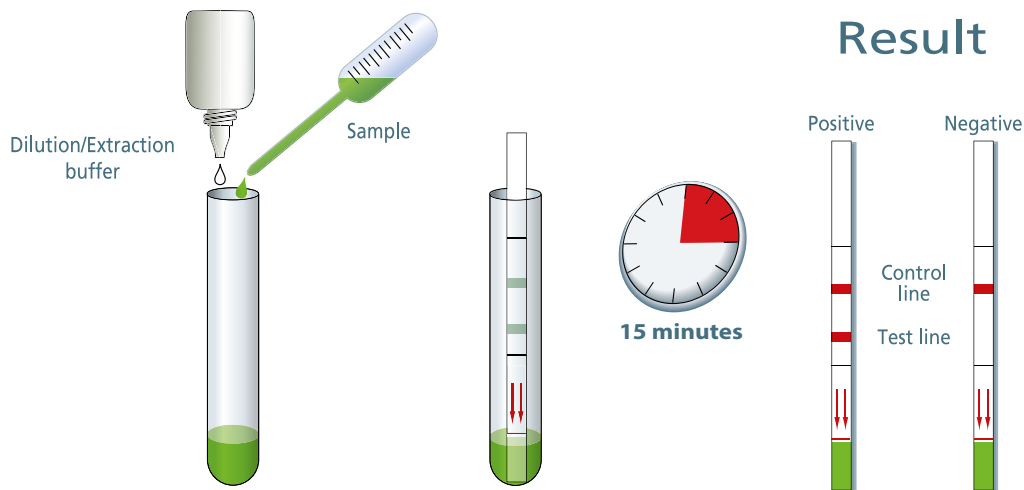
Rapid diagnostic test for *in vitro* detection of Respiratory Syncytial Virus in nasopharyngeal specimens

- Easy to use
- Easy to read
- Specific
- Sensitive
- Reliable
- Rapid (15')



www.corisbio.com

RSV Respi-Strip



Performance of the kit

| | Compared to Culture (n=500) (95% confidence interval) | | Compared to DFA (n=236) (95% confidence interval) | |
|-------------|--|-----------------|--|-----------------|
| Sensitivity | 90% | (84.2 to 93.9%) | 92.2 % | (85.2 to 96.1%) |
| Specificity | 93.3% | (89.9 to 95.7%) | 98.3 % | (93.6 to 99.7%) |
| PPV | 87.4% | (81.4 to 91.8%) | 98.1 % | (92.8 to 99.7%) |
| NPV | 94.8% | (91.6 to 96.8%) | 93% | (92.9 to 96.5%) |
| Agreement | 92.2% | (461/500) | 95.3% | (225/236) |

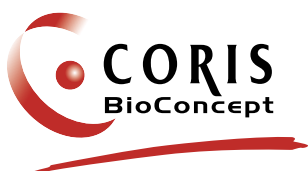
For more technical information

client.care@corisbio.com

Ordering Information

| PRODUCT NAME | DESCRIPTION | STORAGE | CODE |
|----------------------------------|---|-------------|--------|
| RSV Respi-Strip | 25 tests, buffer | 4°C to 30°C | C-1006 |
| RSV K-SeT | 20 cassettes, buffer | 4°C to 30°C | K-1206 |
| RSV K-SeT with collection set | 20 cassettes, buffer, 20 swabs, 20 tube-droppers | 4°C to 30°C | K-1506 |

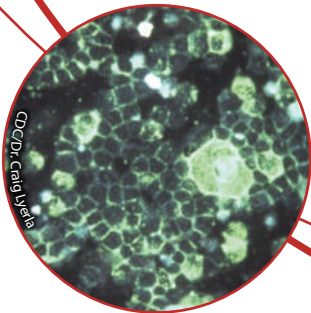
Distributed by:



Science Park CREALYS
Rue Jean Sonet 4A - 5032 Gembloux - Belgium
Ph.: +32 (0) 81 719 910 - Fx.: +32 (0)81 719 919
sales@corisbio.com - www.corisbio.com

MADE IN BELGIUM

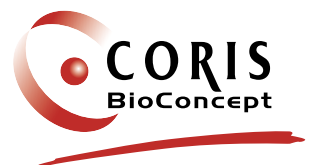
D-CUS-10-06-S/10
July 2021



RSV K-Set

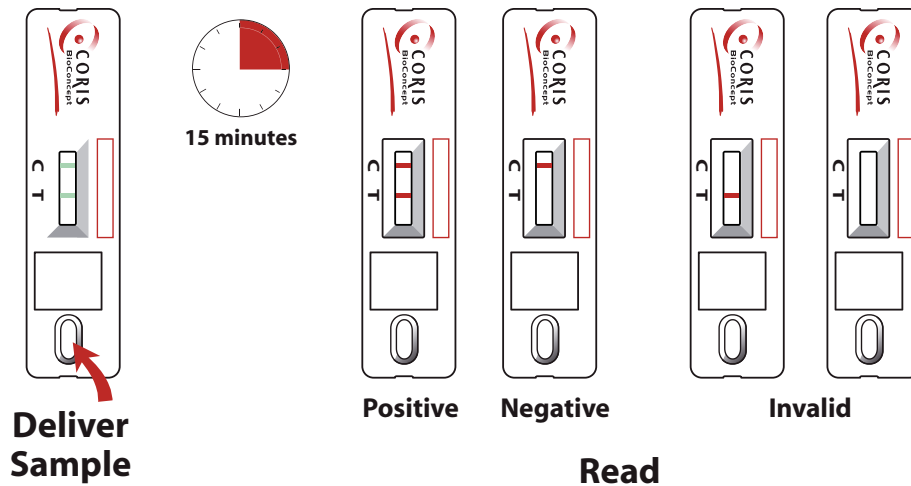
Rapid diagnostic test for *in vitro* detection of Respiratory Syncytial Virus in nasopharyngeal specimens

- Safe
- Easy and ready to use
- Complete set of sampling devices available
- Accurate
- Easy to interpret



www.corisbio.com

RSV K-SeT



Performance of the kit

| | Compared to FIA (n=200) (95 % confidence interval) | |
|-------------|--|------------------|
| Sensitivity | 98.3 % | (89.9 to 99.9 %) |
| Specificity | 100 % | (96.7 to 100 %) |
| PPV | 100 % | (92.4 to 100 %) |
| NPV | 99.3 % | (95.5 to 99.9 %) |
| Agreement | 99.5 % | (199/200) |

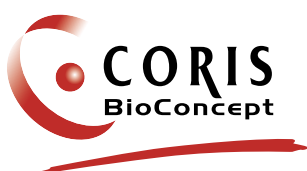
For more technical information

client.care@corisbio.com

Ordering Information

| PRODUCT NAME | DESCRIPTION | STORAGE | CODE |
|----------------------------------|---|----------------|-------------|
| RSV K-SeT | 20 cassettes, buffer | 4°C to 30°C | K-1206 |
| RSV K-SeT with collection set | 20 cassettes, buffer, 20 swabs, 20 tube-droppers | 4°C to 30°C | K-1506 |
| RSV Respi-Strip | 25 tests, buffer | 4°C to 30°C | C-1006 |

Distributed by:



Science Park CREALYS
Rue Jean Sonet 4A - 5032 Gembloux - Belgium
Ph.: +32 (0) 81 719 910 - Fx.: +32 (0)81 719 919
sales@corisbio.com - www.corisbio.com

MADE IN BELGIUM

D-CUS-10-06-K/04
July 2021